

November 2019 Project Status Report

Department of Environmental Resources Management



BEFORE

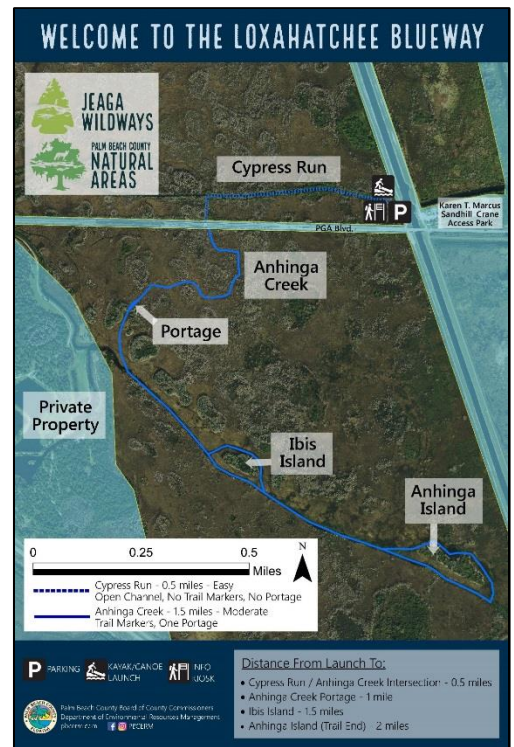
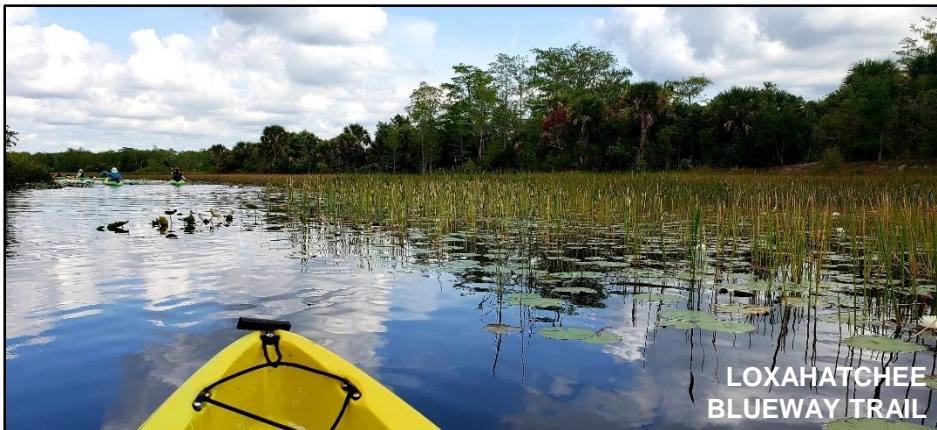


AFTER

Jupiter Beach Park Dune Restoration: After a high-wave event caused significant erosion at Jupiter Beach Park in November, ERM rushed a preventative placement of sand to minimize potential for damage to County facilities. On short notice, the County's contractor was able to quickly place 2,700 cubic yards of sand in front of the restrooms and parking lot. This sand will provide protection from any high-wave events that may occur before the large-scale beach nourishment project reaches the area.

Jupiter/Carlin Beach Nourishment: In December, the United States Army Corps of Engineers will begin a dredging project in Jupiter, for which Palm Beach County is the local sponsor. The contractor has already staged equipment at Carlin Park and work will begin as soon as the dredge arrives in early December. The dredge will pump beach-quality sand from an offshore borrow area to the beach through a series of pipes. Once the sand arrives, bulldozers will shape it into a natural beach berm. Work will occur 24 hours a day, 7 days a week and is expected to continue through the end of January 2020.

Loxahatchee Slough: The canoe and kayak launch and phase one of the Loxahatchee Blueway Trail are complete and open to the public. The canoe and kayak launch is located at 8311 PGA Blvd in Palm Beach Gardens and is located just west of the Karen T. Marcus Sandhill Crane Access Park. The water trail is a moderately easy 2 mile paddle (4 miles round trip) that will take visitors through a historic South Florida waterway. Wetland birds including limpkins, snail kites, and many species of herons and egrets can be seen in this area.



Palm Beach County Board of County Commissioners

Dave Kerner, Mayor, Robert S. Weinroth, Vice Mayor, Hal R. Valeche, Gregg K. Weiss, Mary Lou Berger, Melissa McKinlay, Mack Bernard

What's Blooming Now: ERM staff hosted a pop-up event called "What's Blooming Now?" at Cypress Creek Natural Area. The site was recently managed through a prescribed burn. Participants observed many wildflowers including purple-flowered *Liatris gracilis*, golden *Bigelovia nudata*, yellow-spiked *Solidago chapmanii* and yellow-blooming *Euthamia caroliniana*. Fire promotes the diversity of wildflowers and grasses that have evolved with and depend on the heat, recycling of nutrients, and reduction of shade and vegetative litter. Many of Florida's fire-dependent species are endangered due to the lack of fire.



Tarpon Cove: Sand continues to be graded down to create intertidal mangrove islands and submerged seagrass habitat. Armoring stone is being placed around the islands to stabilize them. Work is expected to continue through December. Upon completion of the first two islands, the County will schedule a volunteer planting event to plant mangroves and cordgrass.

Lake Worth Lagoon Fisheries Monitoring: Quarterly fisheries sampling from July to September found 82 taxa of fish and invertebrates. 27 were found in the central Lagoon and 75 in the northern Lagoon. This included 13 economically important taxa: bonefish, sheepshead, blue crab, common snook, ladyfish, mutton snapper, grey snapper, lane snapper, southern kingfish, stripped mullet, white mullet, gulf flounder and permit.

Haunted Hike: Over 300 brave souls endured rainy conditions to come out for the Haunted Hike held at North Jupiter Flatwoods Natural Area on Friday, October 25th. ERM staff held a "Spooky Hiking Trail" and an educational "Kid Zone".



Adventure Awaits: Register NOW for a **FREE** event at PBCERM.EVENTBRITE.COM!

UPCOMING ERM EVENTS

- December 5: **AN EVENING UNDER THE STARS** at Pine Glades
- December 7: **MORNING CLEAN UP AND HIKE** at Ocean Ridge
- December 7: **BIKE HIKE & SPLASH** at Cypress Creek
- December 12: **A HUNT FOR LADIES TRESSES** at Pine Glades
- December 14: **THREE MILE TRAIL RUN** at Frenchman's Forest



Palm Beach County Board of County Commissioners

Dave Kerner, Mayor, Robert S. Weinroth, Vice Mayor, Hal R. Valeche, Gregg K. Weiss, Mary Lou Berger, Melissa McKinlay, Mack Bernard